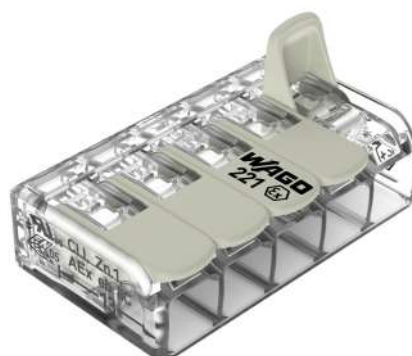


## Data Sheet | Item Number: 221-685

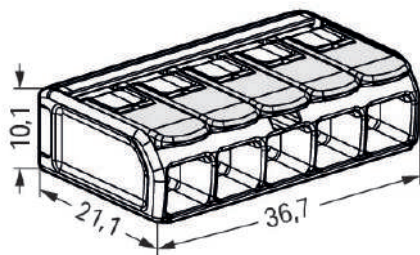
Splicing connector with levers; for all conductor types; for Ex e applications; max. 6 mm<sup>2</sup>; 5-conductor; transparent housing; Operating temperature (max.): 105 °C; 6,00 mm<sup>2</sup>; transparent

<https://www.wago.com/221-685>



Color: ☐ transparent





Dimensions in mm

**Splicing connector with levers, 221 Series, CAGE CLAMP®**

Our splicing connector with levers (item number 221-685) is designed for seamless electrical installations. Whether for intercom system wiring or connecting electrical ovens, WAGO's 221 Series splicing connector allows you to quickly and securely connect different conductor types. Its compact design offers an efficient solution that simplifies your work. Strip lengths must be between 12 mm and 14 mm when connecting conductors to splicing connector with levers. Featuring conductor terminals along with CAGE CLAMP®, this product is highly versatile. Our reliable and maintenance-free CAGE CLAMP® connection makes it easy to connect all conductor types without having to prepare the conductor. For example, you don't need to crimp ferrules. Dimensions: 36.7 x 10.1 x 21.1 mm (width x height x depth). Splicing connector with levers is suitable for conductor cross sections ranging from 0.5 mm² to 6 mm².

WAGO's 221 Series Splicing Connector with levers impresses with its innovative design for different conductor cross-sections. That's why WAGO's lever-equipped splicing connector holds a unique trademark within electrical interconnection technology. The flat levers, which fit seamlessly into the 221's base, act like a cast when closed and can be positioned neatly in any housing without disturbing edges. Due to the wide design of each lever, they can all be operated perfectly without tools for convenient conductor terminations. The transparent housing displays robust technology and enables immediate visual inspection for the correct contact of solid, stranded and fine-stranded conductors. Resembling piano keys, the levers' design perfectly combines the functional and aesthetic connection technology "Made by WAGO." This product is designed for specific Ex applications (please refer to the product datasheet).



Notes	
General safety instructions	<b>NOTICE: Observe installation and safety instructions!</b> <ul style="list-style-type: none"><li>• <b>Only to be used by electricians!</b></li><li>• Do not work under voltage/load!</li><li>• Use only for proper use!</li><li>• Observe national regulations/standards/guidelines!</li><li>• Observe technical specifications for the products!</li><li>• Observe the number of permissible potentials!</li><li>• Do not use damaged/dirty components!</li><li>• Observe conductor types, cross-sections and strip lengths!</li><li>• Insert conductor until it hits the product's backstop!</li><li>• Use original accessories!</li></ul> <b>To be sold only with installation instructions!</b>
Safety Information	The permissible operating voltage of the connector with carrier (440 V or 275 V) depends on the mounting type.
Safety information 2	Only approved in conjunction with a mounting carrier (221-511). Other carriers are possible, see certificate/file. The connectors must be installed in an enclosure meeting the requirements of a recognized protection type per EN 60079-0, Section 1 or EN 60079-31. When installing the connectors in an enclosure of protection type "eb" (increased safety) per EN 60079-7, the clearances and creepage distances of Table 2 for this standard must be observed. See point 1 for the use of accessories. The connectors can be used both in Group II and Group I, as the standard requirements are identical in this case. The use of these components requires a new assessment by a notified certification agency.

Electrical data			
Approvals per		UL 60079	
Use group	B	C	D
Rated voltage	-	440 V	-
Rated current	-	30 A	-

Ex information	
Ratings per	ATEX: PTB 19 ATEX 1001 U / IECEx: PTB 19.001 1U (Ex eb IIC Gb)
Rated voltage EN (Ex e II)	440 V
Rated current (Ex e II)	37 A

Connection data	
Clamping units	5
Total number of potentials	1

Connection 1	
Connection technology	CAGE CLAMP®
Actuation type	Lever
Connectable conductor materials	Copper
Nominal cross-section	6 mm² / 10 AWG
Solid conductor	0.5 ... 6 mm² / 20 ... 10 AWG
Stranded conductor	0.5 ... 6 mm² / 20 ... 10 AWG
Fine-stranded conductor	0.5 ... 6 mm² / 20 ... 10 AWG
Strip length	12 ... 14 mm / 0.47 ... 0.55 inches
Wiring direction	Side-entry wiring

Physical data	
Width	36.7 mm / 1.445 inches
Height	10.1 mm / 0.398 inches
Depth	21.1 mm / 0.831 inches



Material data		
Note (material data)		<a href="#">Information on material specifications can be found here</a>
Color	transparent	
Material group	IIIa	
Insulation material (main housing)	Polycarbonate (PC)	
Flammability class per UL94	V2	
Fire load	0.143 MJ	
Actuator color	light gray	
Weight	7 g	


Environmental requirements		
Ambient temperature (storage)	-40 ... +60 °C	
Continuous operating temperature	-55 ... +105 °C	

Commercial data		
PU (SPU)	150 (15) pcs	
Packaging type	Box	
Country of origin	DE	
GTIN	4055143860581	
Customs tariff number	85369010000	

Product classification		
UNSPSC	39121409	

Environmental Product Compliance		
RoHS Compliance Status	Compliant, No Exemption	

Approvals / Certificates

General approvals			Declarations of conformity and manufacturer's declarations		
			Approval	Standard	Certificate Name
CB	IEC 60998	NL-81003	ATEX-Attestation of Con- formity WAGO GmbH & Co. KG	-	-
cULus_Listed_667F Underwriters Laboratories Inc.	UL 486C	E69654	EU-Declaration of Confor- mity WAGO GmbH & Co. KG	-	-
ENEC 05 DEKRA Certification B.V.	EN 60998	71-123784	UK-Declaration of Confor- mity WAGO GmbH & Co. KG	-	-



Approvals for marine applications



Approval	Standard	Certificate Name
LR Lloyds Register	EN 60998	LR22207029TA

Approvals for hazardous areas



Approval	Standard	Certificate Name
AEx Underwriters Laboratories Inc.	UL 60079	E185892 (AEx eb IIC resp. Ex eb IIC)
ATEX Physikalisch Technische Bundesanstalt	EN IEC 60079-0	PTB 19 ATEX 1001 U (II 2 G Ex eb IIC Gb, I M 2 Ex eb I Mb)
CCC CNEX	GB/T 3836.3	2020312313000185 (Ex eb IIC Gb, Ex eb I Mb)
IECEX Physikalisch Technische Bundesanstalt	IEC 60079-0	IECEX PTB 19.001 1U (EX eb IIC Gb, Ex eb I Mb)
INMETRO TÜV Rheinland do Brasil Ltda.	IEC 60079	TÜV 19.1781 U

Downloads

Environmental Product Compliance

Compliance Search
Environmental Product Compliance 221-685



Documentation

Bid Text
ausschreiben.de 221-685



CAD/CAE-Data

CAD data
2D/3D Models 221-685



CAE data
EPLAN Data Portal 221-685
ZUKEN Portal 221-685



1 Compatible Products
1.1 Optional Accessories
1.1.1 Mounting adapter
1.1.1.1 Mounting accessories



**Item No.: 221-510/000-006**  
Mounting carrier; 221 Series - 6 mm<sup>2</sup>; for DIN-35 rail mounting/screw mounting; blue

**Item No.: 221-511**  
Mounting carrier; for Ex applications; 221 Series - 6 mm<sup>2</sup>; for DIN-35 rail mounting/screw mounting; light gray

Installation Notes
Conductor termination



Strip conductor to 11 mm (0.43 inch).



Then, lower the lever to close the clamp.



Termination: Lift the lever to open the clamping unit and insert a stripped conductor.

Installation
--------------



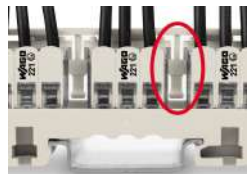
Inserting a connector into the mounting carrier.



Removing a connector from the mounting carrier.



Removing a conductor.



**Mounting type (440 V)**  
Using spacers between the connectors.



**Mounting type (440 V)**  
Vertical mounting on DIN-35 rail



**Mounting type (440 V)**  
Horizontal screw mounting on a flat surface



**Mounting type (440 V)**  
Mounting the carrier via non-conductive screws.



**Mounting type (275 V)**  
No spacers are used between the connectors.



**Mounting type (275 V)**  
Mounting the carrier using conductive screws.

## Testing



Easily test inserted connectors in the carrier –  
however they are mounted.