

# Low Voltage Mounting Brackets

For Low Voltage Class 2 wiring in **EXISTING CONSTRUCTION**

## NEW STYLES!

**Wings**  
hold bracket secure  
when mounting  
screws are tightened

**Recessed  
Screw Hole**  
and  
**Thin  
Front Lip**  
seat wall plate  
flush with wall  
surface

**Oval Hole**  
allows final shifting,  
straightening of device



**LV1LP**  
Low profile  
Low voltage  
mounting  
bracket

Designed for use with 1/2" or 5/8" drywall  
installed on furring strips attached to  
concrete walls.



**LV2LP**  
Low profile  
Two-gang

Arlington's non-metallic, Low Voltage Mounting Brackets are the time- and money-saving solution for faster and easier mounting of Class 2 communications, computer and cable TV wiring.

Designed to mount wall plates flush, our mounting brackets have features that deliver a better-looking, easy to install job; specially designed screw holes, thin front lip and more.

- Brackets adjust to fit various wall board thicknesses
- Bracket is its own template for cut out
- Horizontal or vertical mounting
- They install faster, cost less than metal brackets
- UL/CSA Listed

**NEW! Low profile, single- and two-gang mounting bracket for use with drywall installed on furring strips attached to concrete walls... and a heavy-duty, two-gang mounting bracket with four mounting wings for support in each corner.**

2-gang w/  
four mounting  
wings  
**LV2HD**



**Arlington**

1 Stauffer Industrial Park  
Scranton, PA 18517  
**800/233.4717**  
**Fax 570/562.0646**  
[www.aifittings.com](http://www.aifittings.com)

Patented

# Low Voltage Mounting Brackets

*Easy Installation of Low Voltage Smoke Detectors and More!*

## LVR1

- Adjusts to fit 1/4" to 1-1/2" wall or ceiling thickness.
- Bracket is its own template for cut out. Trace hole along the inside diameter of the bracket. Cut along the outside of the line.
- UL/CSA Listed.

## Fast and Easy Installation of a Low Voltage Smoke Detector

- 1 Trace bracket, then cut hole. Pull wires.
- 2 Insert bracket into opening.
- 3 Tighten three screws to set LVR1 wings securely against drywall.
- 4 Attach low voltage smoke detector to LVR1 through screw holes in the mounting plate.
- 5 Attach smoke detector cover.



Vertical or Horizontal Mounting

*Try all of our low voltage mounting brackets...*

**Our Low Voltage Mounting Brackets install faster than metal – cost less too!**

Catalog Number	UPC/DEI/NAED Mfg. #018997	Description	Adjusts to Fit Wall Thickness	Unit Pkg	Std Pkg
LV1LP	58177	Low profile, single-gang	1/2" to 5/8"	10	100
LV2LP	23102	Low profile, two-gang	1/2" to 5/8"	5	50
LV1	58175	Single-gang	1/4" to 1"	10	100
LV2	10952	Two-gang	1/4" to 1"	5	50
LV2HD	20010	Two-gang (four mounting wings)	1/4" to 1"	5	25
LV3	09600	Three-gang	1/4" to 1"	5	50
LV4	09601	Four-gang	1/4" to 1"	5	50
LVR1	58185	Round	1/4" to 1-1/2"	—	25



Two-gang low profile LV2LP

**NEW!**



Single-gang low profile LV1LP



**Arlington**

1 Stauffer Industrial Park  
Scranton, PA 18517

**800/233.4717**

**Fax 570/562.0646**

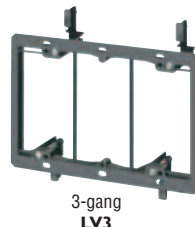
**www.aifittings.com**



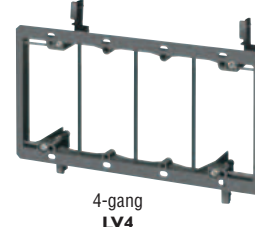
Single-gang LV1



2-gang LV2



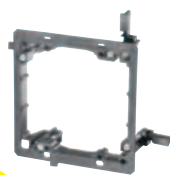
3-gang LV3



4-gang LV4



Round LVR1



2-gang w/ four mounting wings LV2HD



Distributed by

Patented.

LV1 to LV4, LVR1 1107REV0510/25M